



MEMORANDUM

Date: March 16, 2017
To: Board of Park Commissioners
From: Patrick Merriam, Manager, Park Resources
Subject: Change in Park Hours for Broadway Hill Park

Requested Board Action

Parks recently completed a nine-month pilot project in Broadway Hill Park, that changed the operating hours from 4:00 a.m. – 11:30 p.m. to 6:00 a.m. – 10:00 p.m. This was done to respond to concerns regarding illegal behaviors occurring in the park.

Based on Seattle Municipal Code Section 18.12.245, the Superintendent, in conjunction with the Board of Park Commissioners holds a public hearing and the Board makes a recommendation on whether to make the change in hours permanent. This decision is based on staff evaluation and public testimony. The Board's vote can occur the same day as the presentation of the evaluation or at a later date should the Commissioners require additional information to make a decision.

Staff Recommendation

Broadway Hill Park meets the established criteria to permanently change the operating hours. Staff recommend approval of changing the operating hours to 6:00 a.m. – 10:00 p.m. in order to continue the progress made during this pilot. This adjustment in hours, over the 9-month pilot period, reduced the illegal behaviors and reduced the number of complaints and negative impacts on the Capitol Hill neighborhood.

Park Description and location

Broadway Hill Park, located at 500 Federal Ave E, Seattle, WA 98102 is categorized as a Neighborhood Park. Opened in June 2016, this neighborhood park close to bustling Broadway street is a public space accessible with a paved path reachable from both streets. The park also provides wooden tables, plus a barbecue grill and benches.

Issues

Since it opened in 2016 there has been continuous complaints about illegal behavior occurring at the park. Drinking and vandalism occur in the evening hours and people congregate at all hours. Neighbors and Parks staff cite four specific reasons for requesting the change in hours:

- 1) Maintenance workers are burdened with cleaning beer cans, broken glass, and laden trash. The park benches were often found damaged.
- 2) Extensive tagging is pervasive especially late at night and after the park has closed. At sites with similar issues, changing the closing time to 10:00 p.m. enabled SPD to do a sweep through the park and enforce the closure time.
- 3) Neighbors frequently call 911 because of the late night activities which often include loud and boisterous behavior, in addition to illegal activity.
- 4) Community members do not feel safe confronting those who loiter in the park after hours and the earlier closure time enables the police to enforce the rules.

Additional Information

Patrick Merriam: Patrick.Merriam@Seattle.gov

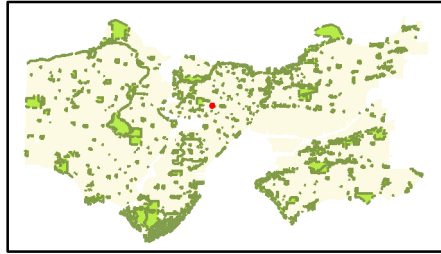
Attachments

Maps

Broadway Hill Park

500 Federal Ave E

Park Boundary



©2017, CITY OF SEATTLE

All rights reserved.

No warranties of any sort, including accuracy, fitness or merchantability accompany this product.

Map Date: 3/17/2017

